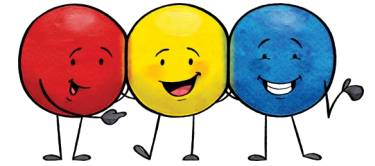


Team Stop Signs

Cooperative Learning Management Strategy



How to Use Team Stop Signs: Print the stop signs on card stock, cut out, and laminate. Keep the stop signs handy to use when students are involved in cooperative learning activities. If a team becomes noisy or off-task, place a stop sign in the middle of the team. Ask them to be quiet for one minute and think about how they can work together more effectively and quietly. After one minute, have the team captain return the stop sign to you. This strategy is simple but effective!